



Turning Point Analytics utilizes a time-tested, real-world strategy that optimizes the client's entry and exit points and adds alpha. TPA defines each stock as Trend or Range to identify actionable inflection points.

"In the short run, the market is a voting machine, but in the long run, it is a weighing machine." - Benjamin Graham

S&P 1500+ DAILY SNAPSHOT – COMMENTS & CHARTS Wednesday, December 04, 2024

Today's TPA Trend-Range Report is included below. TPA Trend-Range Strategy is explained below. Links for Explanations of Technical terms are at the bottom of the report

SELL

- UHS broke down below its 12-month uptrend line in November after doubling between November 2023 and October 2024. The Zoom chart clearly shows the breakdown. The weekly chart shows that long-term support is near 155.

RRG analysis reveals that UHS displays weak relative strength and relative momentum as it has moved from the Leading quadrant to the Lagging quadrant. (RRG below)

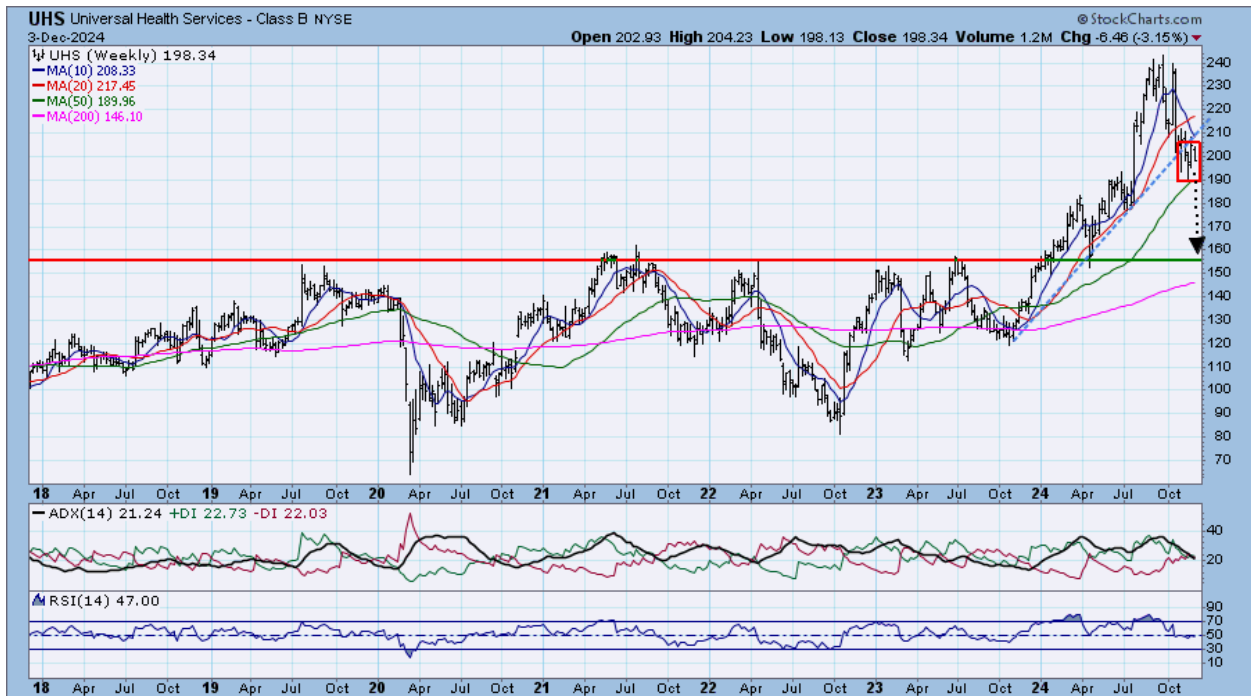
UHS Universal Health Services Inc. 198.3400 Stop = 210.2404 Target = 158.6720 Target=-20.00%



UHS - zoom



UHS - weekly



- NEE fell below its 8-month uptrend line in October. NEE has railed at breakpoint resistance. The Zoom chart reveals the formation of a new downtrend.

RRG analysis reveals that UHS displays weak relative strength and relative momentum as it has moved from the Leading quadrant to the Lagging quadrant. (RRG below)

NEE NextEra Energy Inc 76.2900 Stop = 80.1045 Target = 64.8465 Target= -15.00%



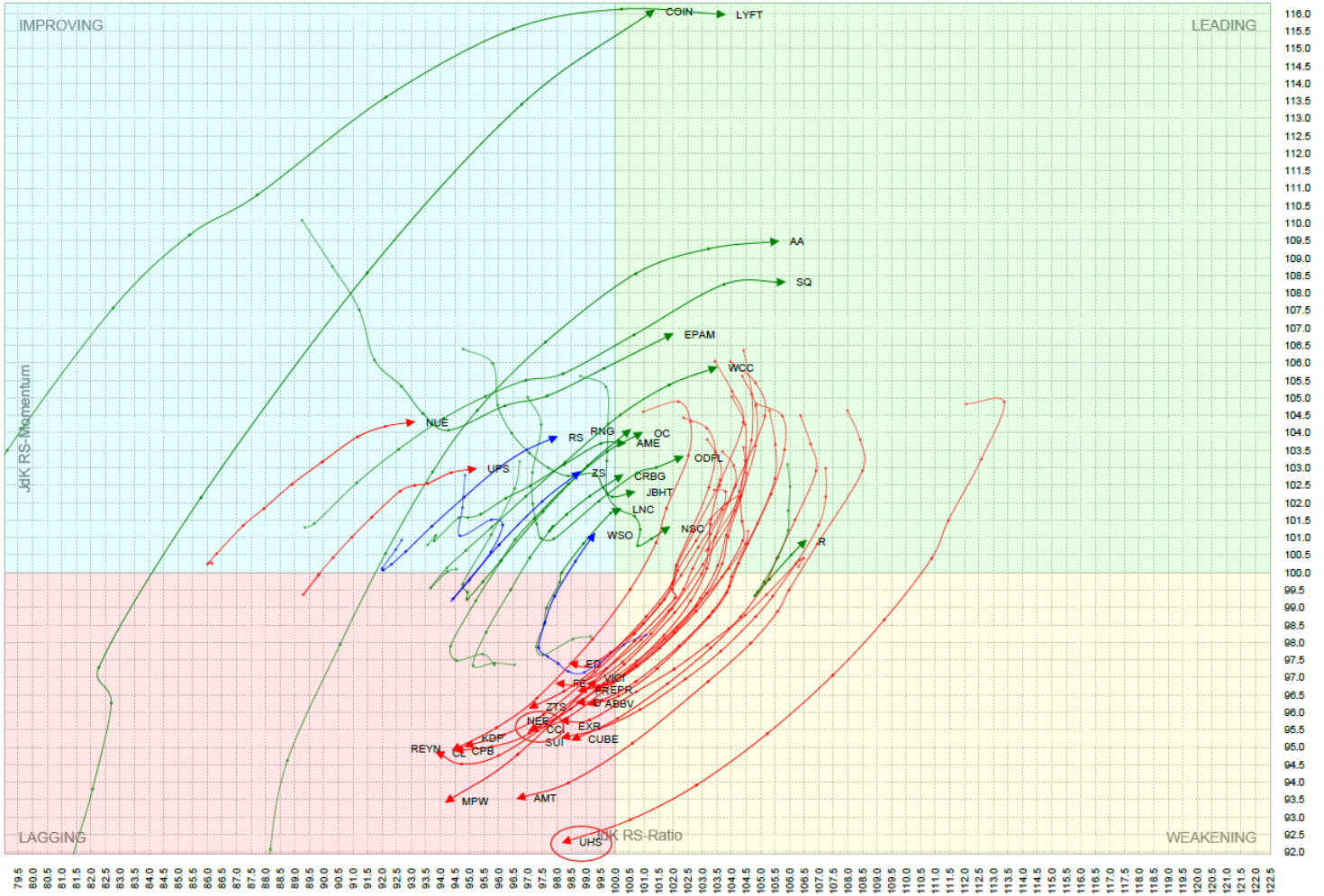
NEE - Zoom



[Relative Rotation Graphs \(RRG\) – explanation video](#)

[RRG – written explanation](#)

Weekly Relative Rotation Graph® Date: 11/29/2024 Benchmark: S&P 500 Index - SPX (WI)



TPA TREND-RANGE STRATEGY (see explanation below)

TPA TREND-RANGE REPORT (New and improved!)

SYMBOL	DESCRIPTION	INDUSTRY	SECTOR	(\$million)		CONDITION	SHORT TERM	POSSIBLE	OVERBOUGHT	RANGE?
				MKT CAP	LAST	TREND/RANGE	ALERT	NEXT MOVE	OVERSOLD	ALERT
AMCR	Amcor PLC	Containers Or Packaging	ProcessIndustries	15,263	10.56	DOWNTREND	TURN UP?	2.23%	-1	
CL	Colgate-Palmolive Co.	Household Or Personal Care	ConsumerNonDurables	77,297	94.61	DOWNTREND	TURN UP?	2.79%	1	
MRK	Merck & Co Inc	Pharmaceuticals Major	HealthTechnology	257,644	101.85	DOWNTREND	TURN UP?	3.34%	1	
REYN	Reynolds Consumer Products Inc	Household Or Personal Care	ConsumerNonDurables	5,832	27.75	DOWNTREND	TURN UP?	4.26%	-1	
TKR	Timken Co.	Industrial Machinery	ProducerManufacturing	5,443	77.62	DOWNTREND	TURN UP?	4.30%	1	
IDXX	Idexx Laboratories Inc.	Medical Specialties	HealthTechnology	35,383	432.11	DOWNTREND	TURN UP?	4.37%	1	
EFX	Equifax Inc.	Financial Publishing Or Services	CommercialServices	32,380	261.23	DOWNTREND	TURN UP?	4.58%	1	
KO	Coca-Cola Co	Beverages Non Alcoholic	ConsumerNonDurables	273,632	63.52	DOWNTREND	TURN UP?	5.34%	0	
DHR	Danaher Corp.	Medical Specialties	HealthTechnology	173,974	240.87	DOWNTREND	TURN UP?	5.56%	1	
TMO	Thermo Fisher Scientific Inc.	Medical Specialties	HealthTechnology	204,416	534.42	DOWNTREND	TURN UP?	5.77%	1	
FBIN	Fortune Brands Innovations Inc	Building Products	ProducerManufacturing	9,778	78.71	DOWNTREND	TURN UP?	5.99%	1	
CRUS	Cirrus Logic Inc.	Semiconductors	ElectronicTechnology	5,612	105.60	DOWNTREND	TURN UP?	7.68%	0	
ERIE	Erie Indemnity Co.	Property Or Casualty Insurance	Finance	20,182	433.37	DOWNTREND	TURN UP?	8.41%	1	
BFAM	Bright Horizons Family Solutions Inc.	Miscellaneous Commercial Servi	CommercialServices	6,727	115.61	DOWNTREND	TURN UP?	8.99%	-1	
OGN	Organon & Co.	Pharmaceuticals Major	HealthTechnology	4,033	15.66	DOWNTREND	TURN UP?	9.35%	-3	
APTIV	Aptiv PLC	Auto Parts OEM	ProducerManufacturing	13,094	55.71	DOWNTREND	TURN UP?	13.93%	-1	
XRAY	DENTSPLY SIRONA Inc	Medical Specialties	HealthTechnology	3,854	19.39	DOWNTREND	TURN UP?	15.73%	-3	
ACHC	Acadia Healthcare Company Inc	Medical Or Nursing Services	HealthServices	3,924	42.25	DOWNTREND	TURN UP?	17.95%	-1	
QRVO	Qorvo Inc	Semiconductors	ElectronicTechnology	6,658	70.43	DOWNTREND	TURN UP?	22.57%	-1	
CPRI	Capri Holdings Ltd	Apparel Or Footwear Retail	RetailTrade	2,695	22.86	DOWNTREND	TURN UP?	33.54%	-1	
LYFT	Lyft Inc	Package Software	TechnologyServices	7,019	16.92	UPTREND	TURN DOWN?	-12.66%	1	
EXEL	Exelixis Inc	Pharmaceuticals Major	HealthTechnology	10,070	35.26	UPTREND	TURN DOWN?	-12.14%	1	
ZION	Zions Bancorporation N.A	Major Banks	Finance	8,756	59.28	UPTREND	TURN DOWN?	-9.91%	2	
SNV	Synovus Financial Corp.	Regional Banks	Finance	7,933	56.00	UPTREND	TURN DOWN?	-9.73%	2	
BOH	Bank of Hawaii Corp.	Regional Banks	Finance	3,111	78.27	UPTREND	TURN DOWN?	-9.31%	2	
DAL	Delta Air Lines Inc.	Airlines	Transportation	40,375	62.57	UPTREND	TURN DOWN?	-8.88%	1	
ALSN	Allison Transmission Holdings Inc	Auto Parts OEM	ProducerManufacturing	10,131	116.96	UPTREND	TURN DOWN?	-8.86%	2	
LZ	LegalZoom.com Inc.	Miscellaneous Commercial Servi	CommercialServices	1,376	7.96	UPTREND	TURN DOWN?	-8.78%	0	
CFR	Cullen Frost Bankers Inc.	Regional Banks	Finance	8,939	139.39	UPTREND	TURN DOWN?	-8.48%	3	
MS	Morgan Stanley	Investment Managers	Finance	210,144	130.44	UPTREND	TURN DOWN?	-8.08%	3	
MTB	M & T Bank Corp	Regional Banks	Finance	35,564	214.33	UPTREND	TURN DOWN?	-8.02%	3	
EVR	Evercore Inc	Investment Banks Or Brokers	Finance	11,535	303.00	UPTREND	TURN DOWN?	-7.86%	3	
MCW	Mister Car Wash Inc	Other Consumer Services	ConsumerServices	2,514	7.80	UPTREND	TURN DOWN?	-7.83%	0	
SF	Stifel Financial Corp.	Investment Managers	Finance	11,643	113.75	UPTREND	TURN DOWN?	-7.61%	3	
FHB	First Hawaiian Inc	Regional Banks	Finance	3,461	27.06	UPTREND	TURN DOWN?	-7.15%	-1	
IDA	Idacorp Inc.	Electric Utilities	Utilities	6,205	116.49	UPTREND	TURN DOWN?	-6.90%	2	
CVLT	CommVault Systems Inc	Package Software	TechnologyServices	7,451	170.39	UPTREND	TURN DOWN?	-6.82%	1	
CNCA	First Citizens Bancshares Inc (NC) - Ordinary Shares - Cl	Regional Banks	Finance	30,915	2209.89	UPTREND	TURN DOWN?	-6.81%	2	
WMB	Williams Cos Inc	Oil And Gas Pipelines	IndustrialServices	68,996	56.60	UPTREND	TURN DOWN?	-6.78%	1	
RF	Regions Financial Corp.	Major Banks	Finance	23,940	26.34	UPTREND	TURN DOWN?	-6.70%	1	
OZK	Bank OZK	Regional Banks	Finance	5,481	48.32	UPTREND	TURN DOWN?	-6.27%	2	
JHG	Janus Henderson Group PLC	Investment Managers	Finance	7,048	44.33	UPTREND	TURN DOWN?	-6.24%	1	
PPC	Pilgrim's Pride Corp.	gricultural Commodities Or Millit	ProcessIndustries	12,157	51.27	UPTREND	TURN DOWN?	-5.76%	0	
PINC	Premier Inc	Hospital Or Nursing Managemen	HealthServices	2,133	22.19	UPTREND	TURN DOWN?	-5.69%	-1	

SYMBOL	DESCRIPTION	INDUSTRY	SECTOR	(\$million)		CONDITION	SHORT TERM	POSSIBLE	OVERBOUGHT	RANGE?
				MKT CAP	LAST	TREND/RANGE	ALERT	NEXT MOVE	OVERSOLD	ALERT
LAZ	Lazard Ltd.	Investment Banks Or Brokers	Finance	4,951	56.64	UPTREND	TURN DOWN?	-5.56%	1	
STLD	Steel Dynamics Inc.	Steel	NonEnergyMinerals	21,802	143.20	UPTREND	TURN DOWN?	-5.32%	2	
ODFL	Old Dominion Freight Line Inc.	Trucking	Transportation	46,669	218.59	UPTREND	TURN DOWN?	-5.22%	1	
KEY	KeyCorp	Major Banks	Finance	18,646	18.81	UPTREND	TURN DOWN?	-4.97%	-1	
BHF	Brighthouse Financial Inc	Life Or Health Insurance	Finance	3,015	50.80	UPTREND	TURN DOWN?	-4.65%	0	
TFC	Truist Financial Corporation	Regional Banks	Finance	61,637	46.43	UPTREND	TURN DOWN?	-4.54%	0	
RHI	Robert Half Inc	Personnel Services	CommercialServices	7,575	73.36	UPTREND	TURN DOWN?	-4.30%	2	
KNX	Knight-Swift Transportation Holdings Inc	Trucking	Transportation	9,189	56.76	UPTREND	TURN DOWN?	-4.24%	0	
CW	Curtiss-Wright Corp.	Aerospace And Defense	ElectronicTechnology	14,079	371.01	UPTREND	TURN DOWN?	-4.22%	2	
MRCY	Mercury Systems Inc	Aerospace And Defense	ElectronicTechnology	2,334	39.14	UPTREND	TURN DOWN?	-4.16%	1	
LNC	Lincoln National Corp.	Life Or Health Insurance	Finance	5,947	34.91	UPTREND	TURN DOWN?	-4.10%	0	
ZS	Zscaler Inc	Data Processing Services	TechnologyServices	30,477	198.64	UPTREND	TURN DOWN?	-4.03%	2	
JCI	Johnson Controls International plc	Industrial Machinery	ProducerManufacturing	54,617	82.48	UPTREND	TURN DOWN?	-3.86%	2	
GM	General Motors Company	Motor Vehicles	ConsumerDurables	59,005	53.66	UPTREND	TURN DOWN?	-3.66%	0	
ADSK	Autodesk Inc.	Package Software	TechnologyServices	64,276	298.96	UPTREND	TURN DOWN?	-2.86%	2	
WHR	Whirlpool Corp.	Electronics Or Appliances	ConsumerDurables	6,087	110.39	UPTREND	TURN DOWN?	-2.79%	1	
HAYW	Hayward Holdings Inc	Recreational Products	ConsumerDurables	3,443	15.98	UPTREND	TURN DOWN?	-2.65%	-1	
HAYW	Hayward Holdings Inc	Recreational Products	ConsumerDurables	3,443	15.98	UPTREND	TURN DOWN?	-2.65%	-1	
ATO	Atmos Energy Corp.	Gas Distributors	Utilities	22,693	146.03	UPTREND	TURN DOWN?	-2.39%	1	
RGAI	Reinsurance Group Of America Inc.	Multi Line Insurance	Finance	14,873	225.81	UPTREND	TURN DOWN?	-2.37%	1	
EOG	EOG Resources Inc.	Oil And Gas Production	EnergyMinerals	74,131	131.80	UPTREND	TURN DOWN?	-2.24%	1	
BRDA	Liberty Broadband Corp - Ordinary Shares - Series A	Wireless Telecommunications	Communications	12,189	85.33	UPTREND	TURN DOWN?	-2.17%	2	
PNW	Pinnacle West Capital Corp.	Electric Utilities	Utilities	10,379	91.28	UPTREND	TURN DOWN?	-2.07%	1	
BRDK	Liberty Broadband Corp - Ordinary Shares - Series C	Wireless Telecommunications	Communications	12,258	85.81	UPTREND	TURN DOWN?	-2.03%	2	
WEC	WEC Energy Group Inc	Electric Utilities	Utilities	31,072	98.22	UPTREND	TURN DOWN?	-0.89%	1	
ABT	Abbott Laboratories	Medical Specialties	HealthTechnology	201,700	116.29	UPTREND	TURN DOWN?	-0.34%	1	
SPCE	Virgin Galactic Holdings Inc	Aerospace And Defense	ElectronicTechnology	193	6.69	UPTREND	TURN DOWN?	0.70%	-1	
WOOF	Petco Health and Wellness Co Inc	Internet Retail	RetailTrade	1,418	5.17	RANGE	TOP	-28.71%	1	
FIVE	Five Below Inc	Discount Stores	RetailTrade	5,677	103.20	RANGE	TOP	-24.76%	2	
NFE	New Fortress Energy LLC	Gas Distributors	Utilities	2,653	10.55	RANGE	TOP	-20.96%	0	
TTD	Trade Desk Inc	Package Software	TechnologyServices	68,686	139.16	RANGE	TOP	-16.69%	3	!!
SIX	Skechers U S A Inc.	Apparel Or Footwear	ConsumerNonDurables	10,443	69.17	RANGE	TOP	-16.03%	1	!!
OKTA	Okta Inc	Package Software	TechnologyServices	13,879	81.71	RANGE	TOP	-11.74%	2	!!
META	Meta Platforms Inc.	Internet Software Or Services	TechnologyServices	1,548,853	613.65	RANGE	TOP	-11.16%	2	
AAPL	Apple Inc	Telecommunications Equipment	ElectronicTechnology	3,667,849	242.65	RANGE	TOP	-9.99%	1	
SY	Sysco Corp.	Food Distributors	DistributionServices	39,048	79.49	RANGE	TOP	-7.30%	1	
MSFT	Microsoft Corporation	Package Software	TechnologyServices	3,205,920	431.20	RANGE	TOP	-5.02%	1	
IWF	iShares Russell 1000 Growth ETF	Investment Trusts Or Mutual Func	Miscellaneous	71,482,848,000	404.20	RANGE	TOP	-4.87%	1	!!
TPX	Tokyo MEXI 100 Index	0	0		1902.56	RANGE	TOP	-3.61%	1	
HOLX	Hologic Inc.	Medical Specialties	HealthTechnology	17,581	77.47	RANGE	BOTTOM	3.78%	1	!!
EGP	Eastgroup Properties Inc.	Real Estate Investment Trusts	Finance	8,405	169.78	RANGE	BOTTOM	4.00%	1	
SO	Southern Company	Electric Utilities	Utilities	94,513	86.26	RANGE	BOTTOM	4.04%	1	
VTR	Ventas Inc	Real Estate Investment Trusts	Finance	26,333	62.77	RANGE	BOTTOM	4.19%	0	
WELL	Welltower Inc.	Real Estate Investment Trusts	Finance	82,724	132.85	RANGE	BOTTOM	5.57%	1	

SYMBOL	DESCRIPTION	INDUSTRY	SECTOR	(\$million)		CONDITION	SHORT TERM	POSSIBLE	OVERBOUGHT	RANGE?
				MKT CAP	LAST					
UPS	United Parcel Service Inc.	Air Freight Or Couriers	Transportation	110,691	129.71	RANGE	BOTTOM	5.94%	1	
DINO	HF Sinclair Corp.	Oil Refining Or Marketing	EnergyMinerals	7,616	40.48	RANGE	BOTTOM	7.15%	0	
AFL	Aflac Inc.	Multi Line Insurance	Finance	59,308	106.76	RANGE	BOTTOM	8.19%	1	!!
COP	Conoco Phillips	Oil And Gas Production	EnergyMinerals	137,182	106.05	RANGE	BOTTOM	9.47%	1	!!
SLG	SL Green Realty Corp.	Real Estate Investment Trusts	Finance	5,296	73.82	RANGE	BOTTOM	11.11%	1	
DAR	Darling Ingredients Inc	Food Specialty Or Candy	ConsumerNonDurables	5,960	37.47	RANGE	BOTTOM	16.45%	0	
INTC	Intel Corp.	Semiconductors	ElectronicTechnology	96,913	22.47	RANGE	BOTTOM	16.69%	0	
ICUI	ICU Medical Inc.	Medical Specialties	HealthTechnology	3,835	156.64	RANGE	BOTTOM	17.18%	1	
ELAN	Elanco Animal Health Inc	Biotechnology	HealthTechnology	6,170	12.48	RANGE	BOTTOM	17.27%	-2	
AAL	American Airlines Group Inc	Airlines	Transportation	9,509	14.47	UPTREND				

TPA TREND-RANGE STRATEGY EXPLAINED

Alerts:

1. Uptrend stocks trading below short term moving averages:

- Possible buy at uptrend support (chart 1)
- Possible sell if medium-term trend break (chart 2)

2. Downtrend stocks trading above short-term moving averages

- Possible sell at downtrend resistance (chart 3)
- Possible buy if medium-term trend break (chart 4)

3. Range stocks (low trend strength) at the top or bottom 10% of their 2 STD DEV Bollinger Band

- Possible buy at bottom of range (chart 5)
- Possible sell at top of range (chart 6)

Medium-term Trend Strength determined by DMI ADX

Uptrend – trend strength & DMI+ > DMI-

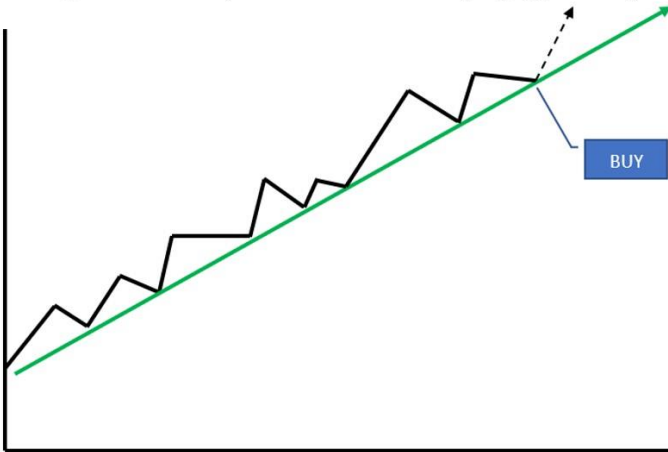
Downtrend – trend strength & DMI- > DMI+

Range – low trend strength

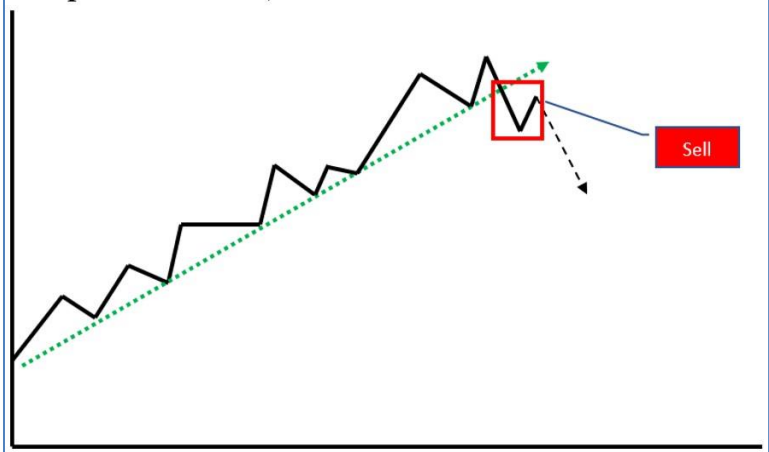
Actionable stocks fit one of the 6 TPA charts at the bottom of this report

TPA looks first to Trend-Range for actionable ideas. Other variables must also be examined including, but not confined to, TPA's ongoing macro investment themes, relative strength compared to the market, sector, and subsector, overbought or oversold characteristics, other technical patterns that may exist, patterns that involve fundamentals or EPS surprise, longer-term support and resistance levels, and longer-term uptrends and downtrend lines.

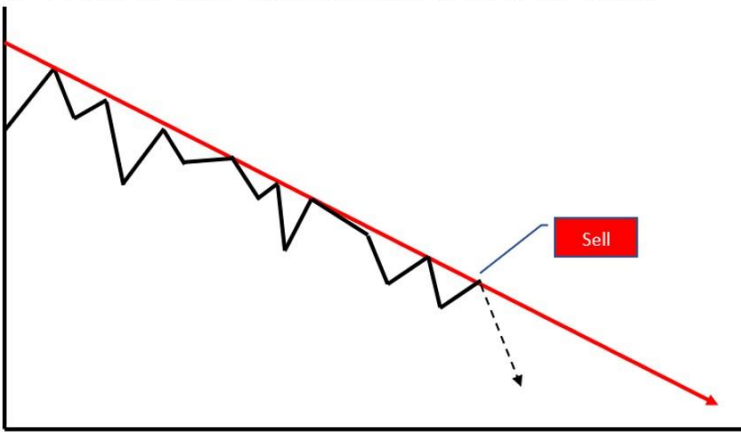
1. **Uptrend intact**, recent decline is a buying opportunity



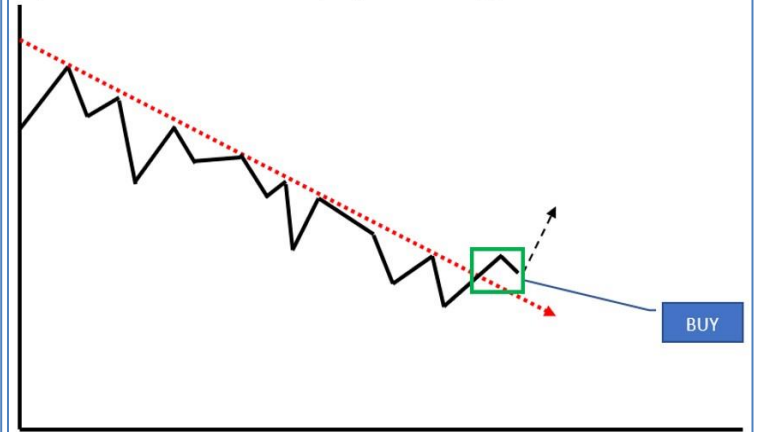
2. **Uptrend violation**, sell at new resistance



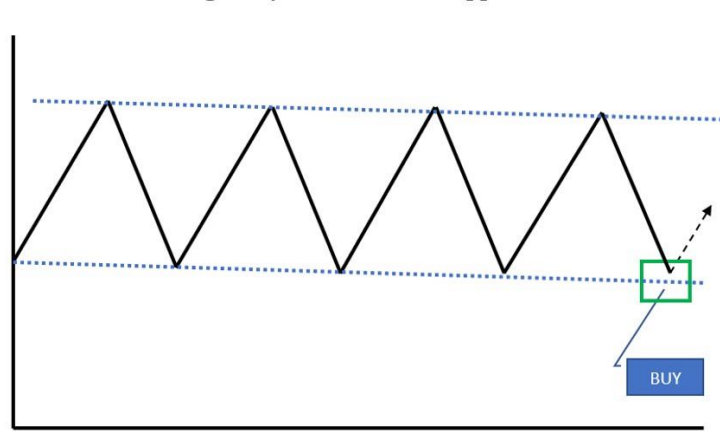
3. **Downtrend intact**, recent rally is a selling opportunity



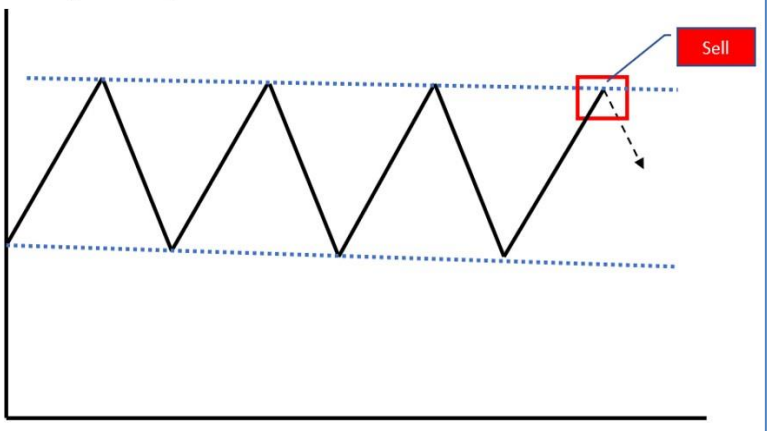
4. **Downtrend violation**, buy at new support



5. **Bottom of range**, buy at established support



6. **Top of range**, sell at established resistance



CLICK ON LINKS BELOW FOR TECHNICAL INDICATOR EXPLANATIONS:

[ASCENDING - DESCENDING TRIANGLE](#)

[BASING-TOPPING-CONSOLIDATION](#)

[BREAKOUT \(Breakdown\)](#)

[CHANNEL & RANGE](#)

[DIRECTIONAL MOVEMENT INDEX \(DMI\)](#)

[DOUBLE BOTTOM or DOUBLE TOP](#)

[MACD-MOVING AVERAGE CONVERGENCE-DIVERGENCE](#)

[MOVING AVERAGES](#)

[RELATIVE STRENGTH & PEER STOCK PERFORMANCE](#)

[REPEATING PATTERNS](#)

[RSI-RELATIVE STRENGTH](#)

[SUPPORT, RESISTANCE, BREAKOUT, BREAKDOWN](#)

[TREND](#)

Visit TPA at <http://www.turningpointanalyticsllc.com/>

ALWAYS REMEMBER: No strategy exists in a vacuum – always evaluate the relevant sector & market.
Over 80% of portfolio performance is determined by sector and market forces (Ibbotson & Kaplan study – January/February 2000)

Turning Point Analytics Disclaimer

Turning Point Analytics (TPA) is only one of many tools that an investor should use to make a final investment decision. TPA is an overlay on top of a client's good fundamental or macro analysis. TPA does not create or provide fundamental analysis. The information in this communication may include technical analysis. Technical analysis is a discipline that studies the past trading history of a security while trying to forecast future price action. Technical analysis does not consider the underlying fundamentals of the security in question and it does not provide information reasonably sufficient upon which to base an investment decision. Investors should not rely on technical analysis alone while making an investment decision. Before making an investment decision, investors should consider reviewing all publicly available information regarding the security in question, including, but not limited to, the underlying fundamentals of the security and other information which is available in filings with the Securities and Exchange Commission. The information and analysis contained in reports provided by TPA are copyrighted and may not be duplicated or redistributed for any reason without the express written consent of TPA. The information in this communication is for institutional or sophisticated investors only. By accepting this communication, the recipient agrees not to forward, and/or copy the information to any other person, except as permitted, or required by law. TPA does not guarantee accuracy or completeness. TPA is a publisher of technical research and has no investment banking or advisory relationship with any company mentioned in any report. Reports are neither a solicitation to buy nor an offer to sell securities. Past performance is in no way indicative of future results. Opinions expressed are subject to change without notice. TPA will provide, upon request, the details of any past recommendations. TPA's analysis and recommendations should not be used as the sole reason to buy or sell any security. TPA may compensate brokers and intermediaries for sales and marketing services. You

understand and acknowledge that there is a very high degree of risk involved in trading securities and/or currencies. The Company, the authors, the publisher, and all affiliates of Company assume no responsibility or liability for your trading and investment results. It should not be assumed that the methods, techniques, or indicators presented will be profitable or that they will not result in losses. Statements, data, and analysis made by TPA or in its publications, are made as of the date stated and are subject to change without notice. TPA and/or its officers and employees may, from time to time acquire, hold, or sell a position in the securities mentioned herein. Upon request, TPA will furnish specific information in this regard. TPA will not be held liable for losses caused by conditions and/or events that are beyond TPA's control including, but not limited to war, strikes, natural disasters, new government restrictions, market fluctuations, and communications disruptions.